

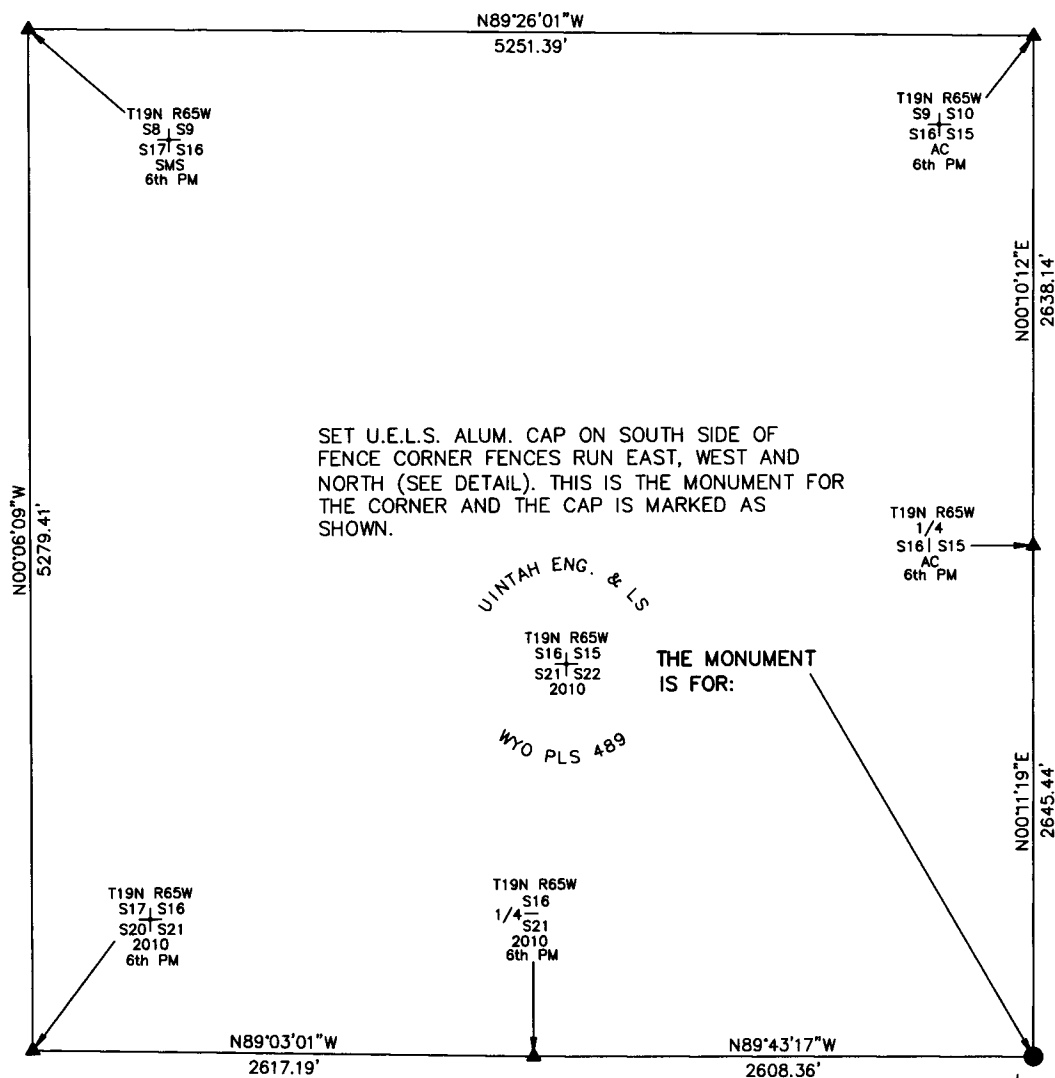
# State of Wyoming Corner Record

## CORNER PERPETUATION AND FILING ACT,

Regulations of the Board of Registration for Professional Engineers and Land Surveyors.)

Reverse side of this form may be used if more space is needed.

Record of original survey and citation of source of historic information (if corner is lost or obliterated). Description of corner monumentation evidence found and/or monument and accessories established to perpetuate the location of this corner. Sketch of relative location of monument, accessories, and reference points with course and distance to adjacent corner(s) (if determined in this survey). Method and rationale for reestablishment of lost or obliterated corner.



SCALE 1"=1000'  
(EXCEPT IN TRIVIAL CASES)  
BEARINGS ARE RELATED TO WGS 84 WITH GPS OBSERVATIONS  
DRAWN BY: M.D.  
P.C. G. STREETER  
COUNTY: LARAMIE

SET U.E.L.S. ALUM. CAP ON SOUTH SIDE OF FENCE CORNER FENCES RUN EAST, WEST AND NORTH (SEE DETAIL). THIS IS THE MONUMENT FOR THE CORNER AND THE CAP IS MARKED AS SHOWN.

UINTAH ENG. & LS

T19N R65W  
S16, S15  
S21, S22  
2010

THE MONUMENT IS FOR:

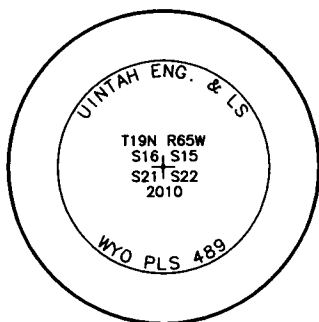
WYO PLS 489

T19N R65W  
S17, S16  
S20, S21  
2010  
6th PM

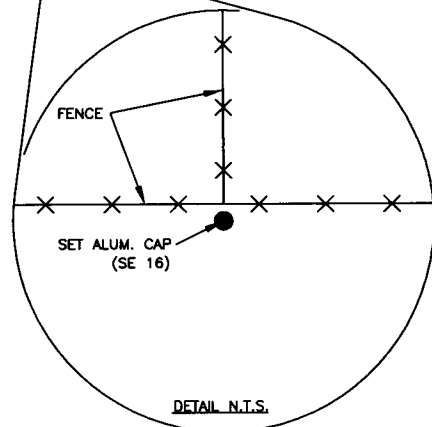
T19N R65W  
S16  
1/4 S21  
2010  
6th PM

N89°03'01"W  
2617.19'

N89°43'17"W  
2608.36'



THE MONUMENT IS MARKED



Date of Field Work: 06/22/2010

Office Reference: \_\_\_\_\_

### CROSS INDEX DIAGRAM

1	2	3	4	5	6	7	8	9	10	11	12	13	14	15	16	17	18	19	20	21	22	23	24	25	
A																									A
B																									B
C		6		5		4		3		2															C
D																									D
E																									E
F																									F
G			7		8		9		10		11		12												G
H																									H
J																									J
K																									K
L																									L
M																									M
N																									N
O																									O
P																									P
Q																									Q
R																									R
S																									S
T																									T
U																									U
V																									V
W																									W
X																									X
Y																									Y
Z																									Z
1	2	3	4	5	6	7	8	9	10	11	12	13	14	15	16	17	18	19	20	21	22	23	24	25	

Firm/Agency, Address

UELS, LLC

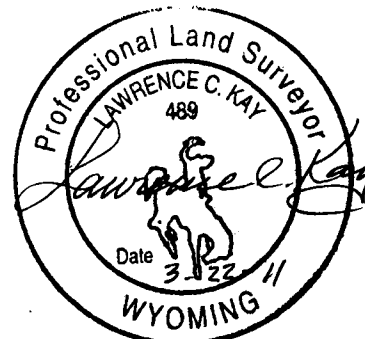
85 South 200 East

Vernal, Utah 84078

Telephone Number: 435-789-1017

This corner record was prepared by me or under my direction and supervision.

SEAL & SIGNATURE



RECORDED 3/25/2011 AT 11:42 AM REC# 565483 BK# 2213 PG# 307  
DEBRA K. LATHROP, CLERK OF LARAMIE COUNTY, WY PAGE 1 OF 1